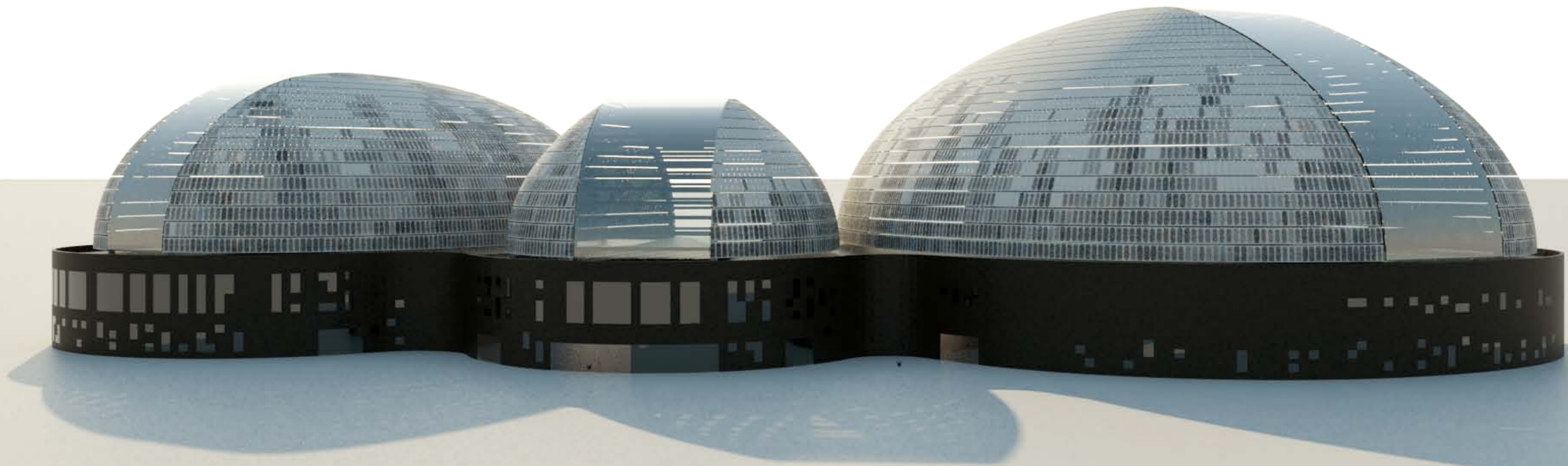
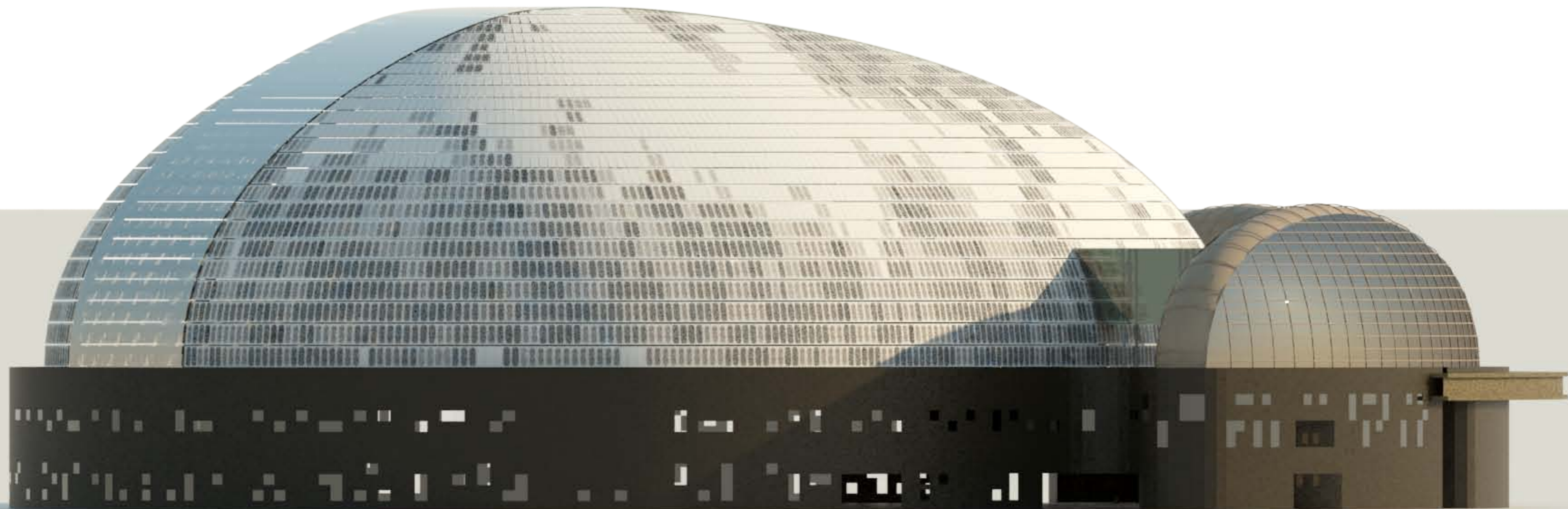
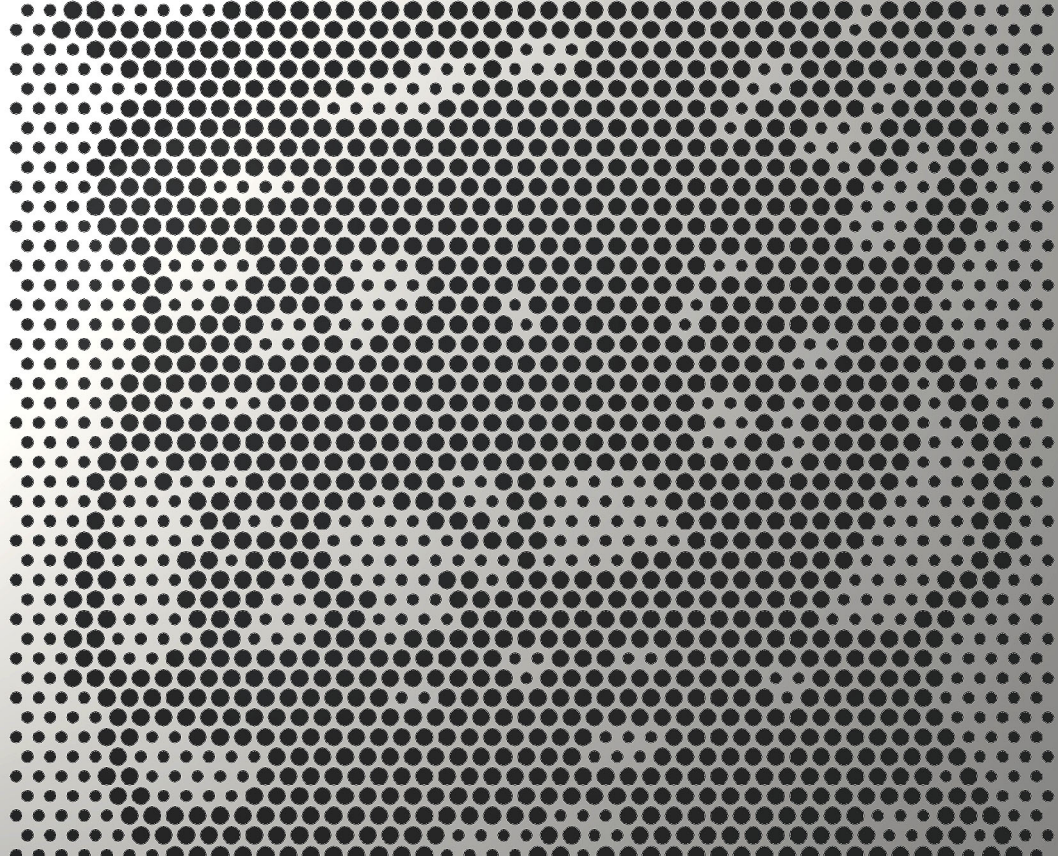


ants Bars









9种面板

每块板有两种穿孔孔径

6种穿孔孔径

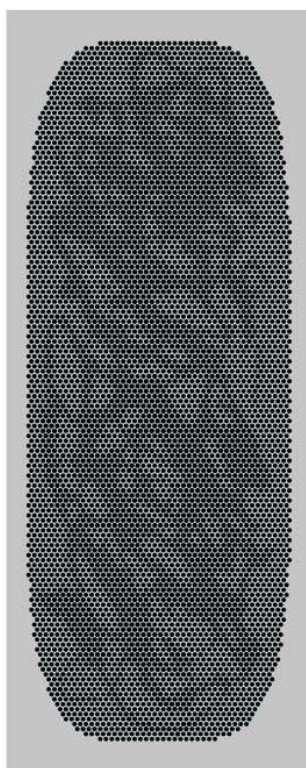
- 4 mm
- 8 mm
- 10 mm
- 11 mm
- 12 mm
- 13 mm

* 9 types of metal panel

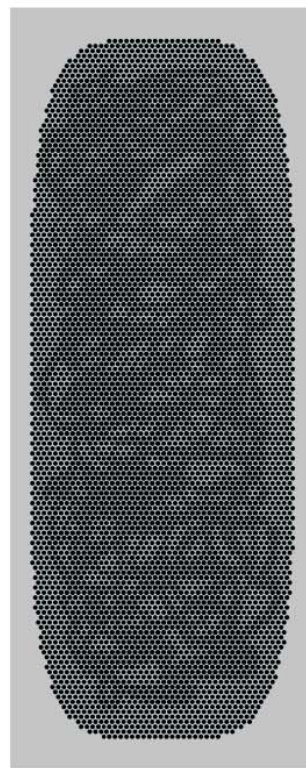
*2 types of circle perforation for a panel

* 6 dimensions of perforation :

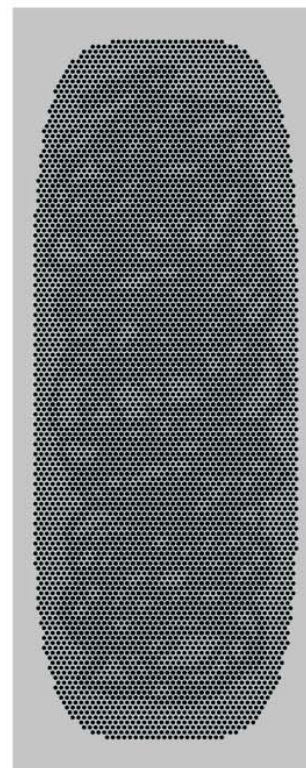
- 4 mm
- 8 mm
- 10 mm
- 11 mm
- 12 mm
- 13 mm



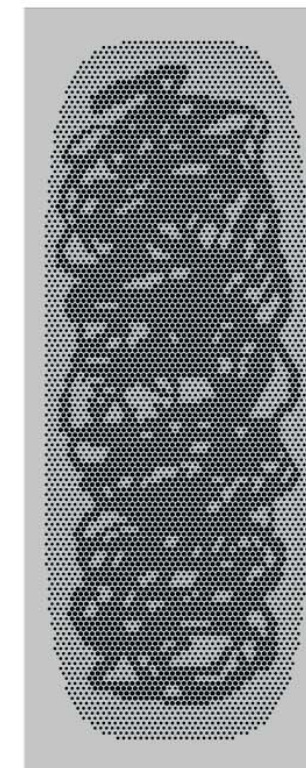
P01_A12-13



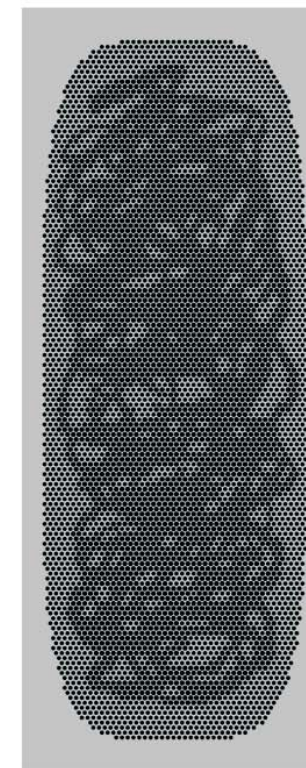
P02_B12-13



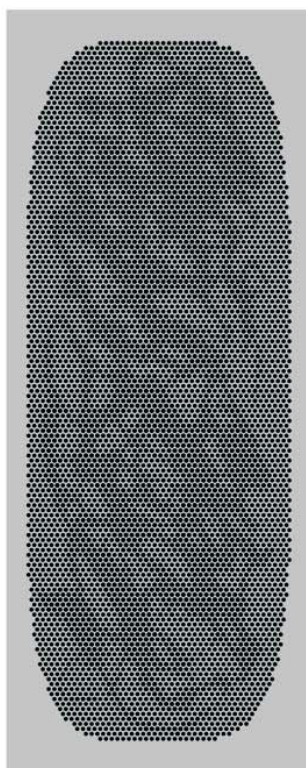
P03_C11-12



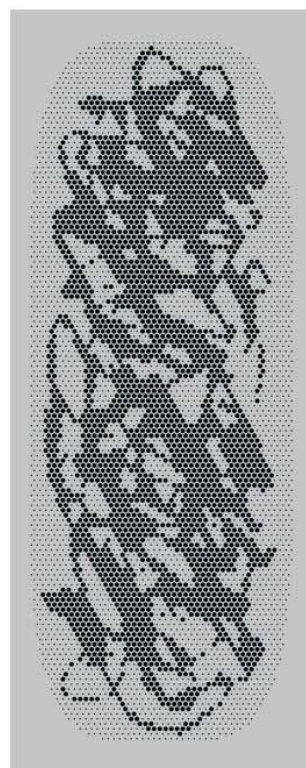
P04_C08-12



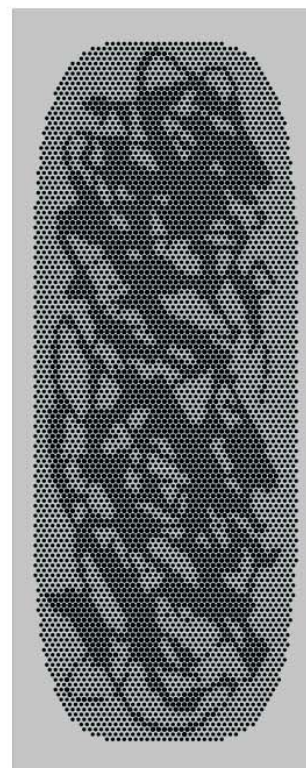
P05_C11-13



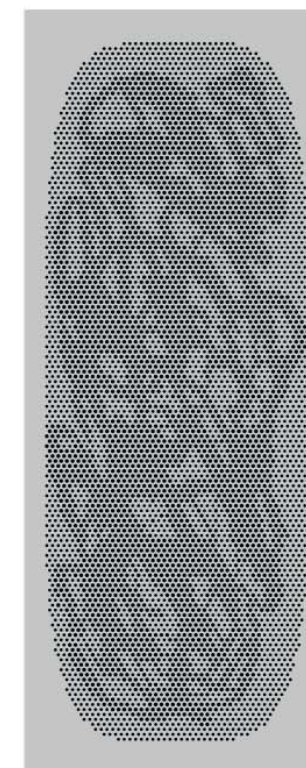
P06_A11-12



P07_A04-12



P08_A10-13



P09_D08-10



P10_E

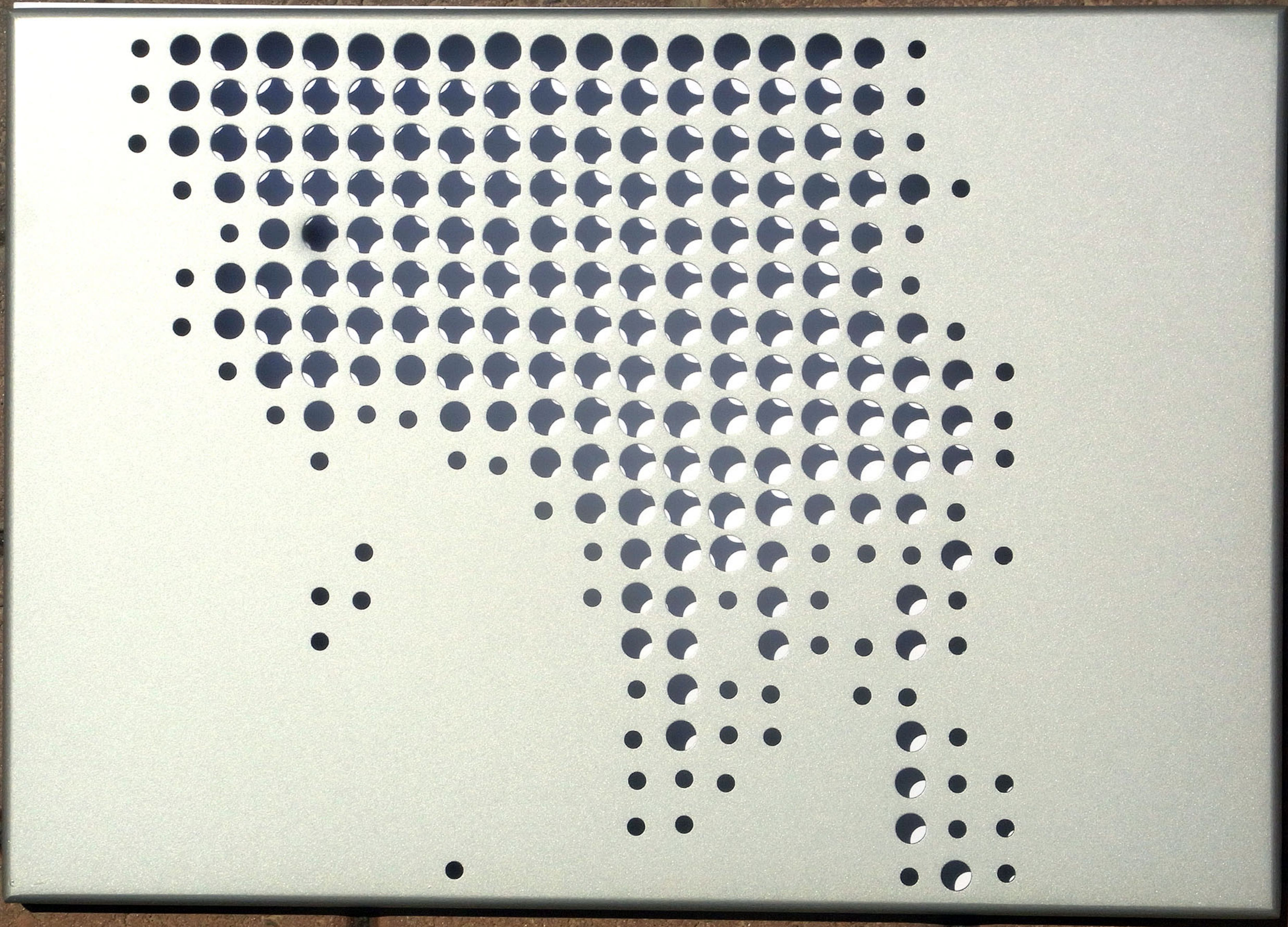




特殊有色钛金属板
正如在施工现场确定
color panels as approved on
construction site



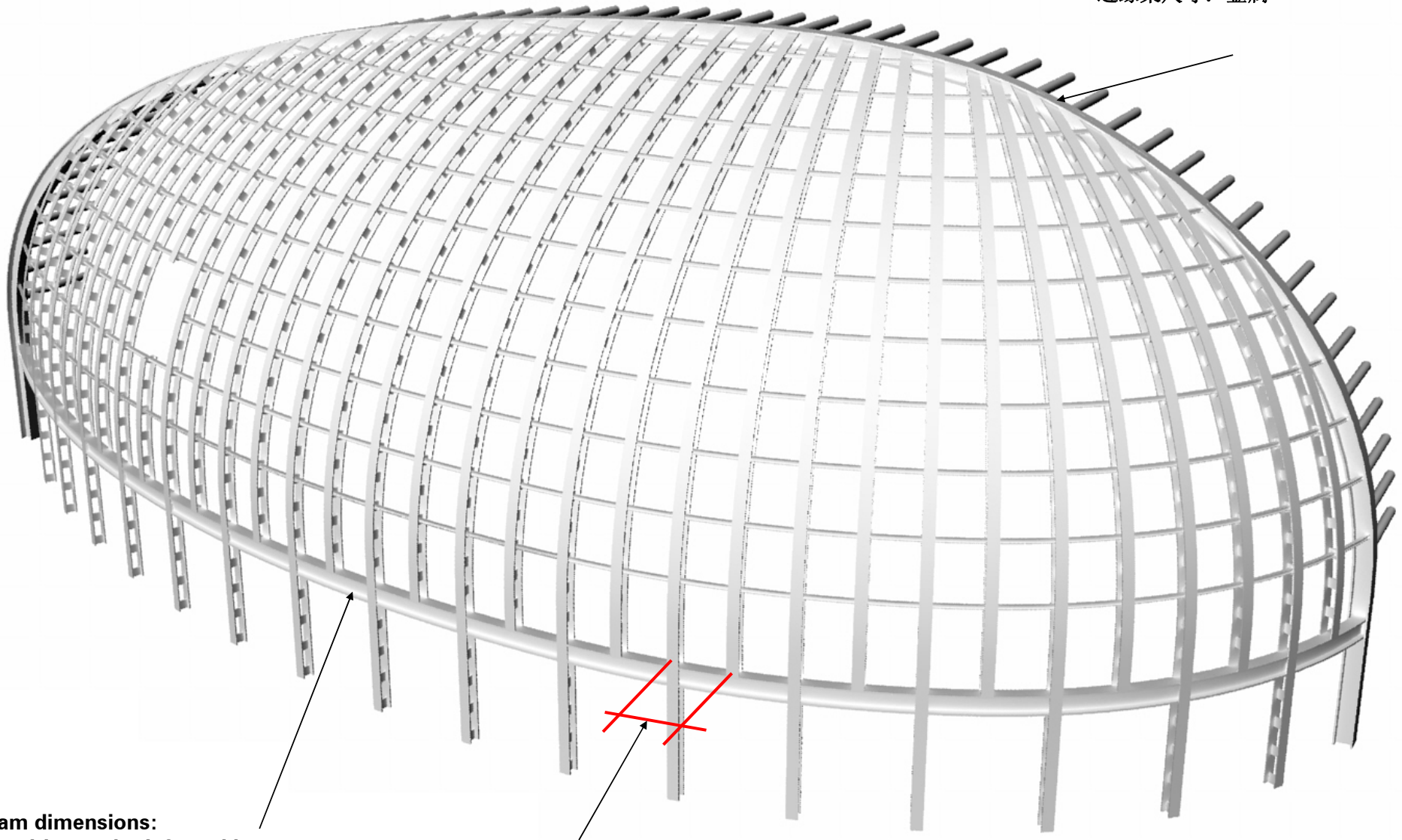
歌剧院壳体立面
Facade of Opera Hall
Shell



> Shells composition 壳体构成

Shells / Primary structure principle 壳体/主要结构原则

Edge beam dimensions: Metal
边缘梁尺寸: 金属

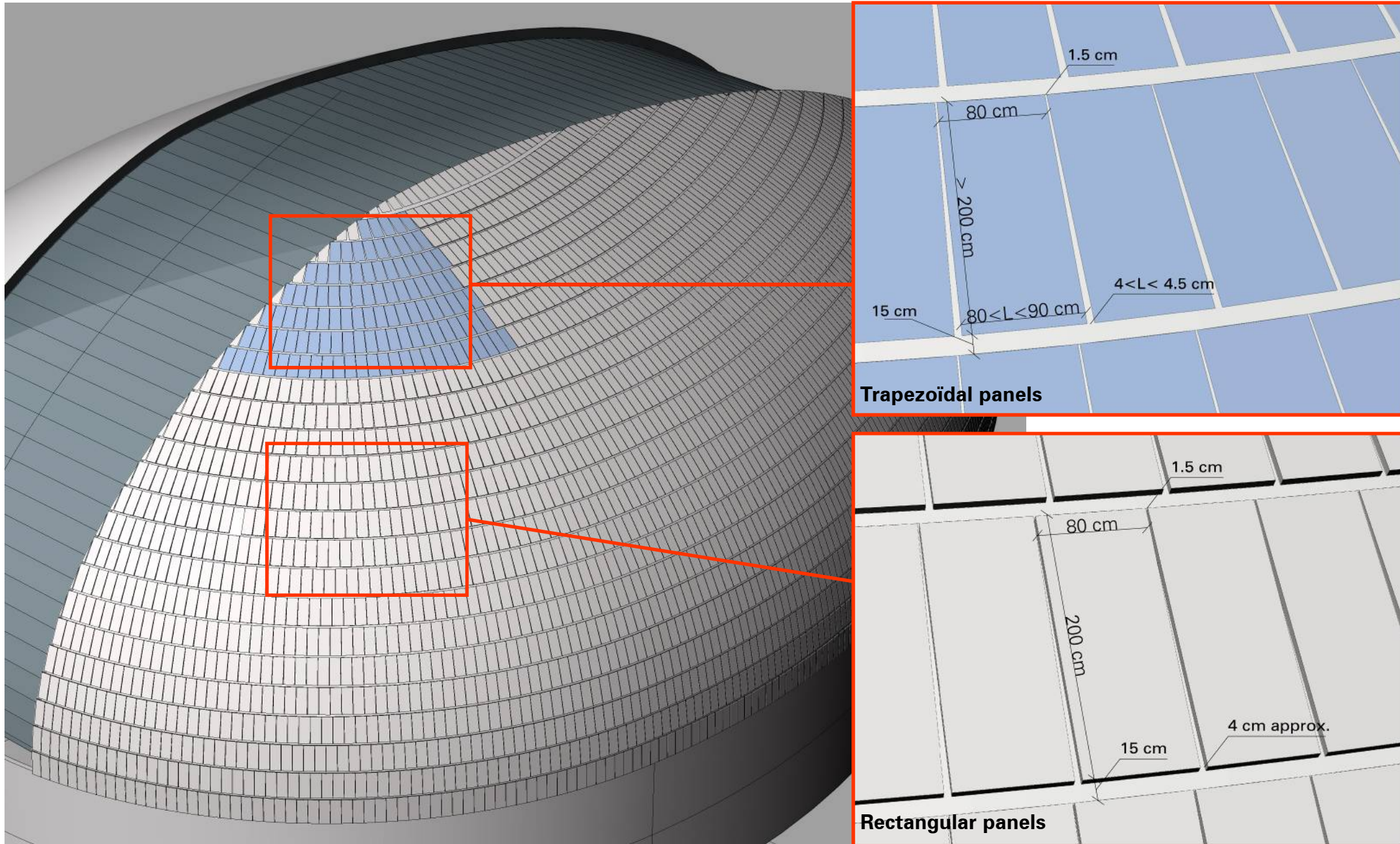


Base beam dimensions:
concrete with metal reinforced beam

圈梁尺寸: 金属结构加强的混凝土

Variable distance 变化的间距

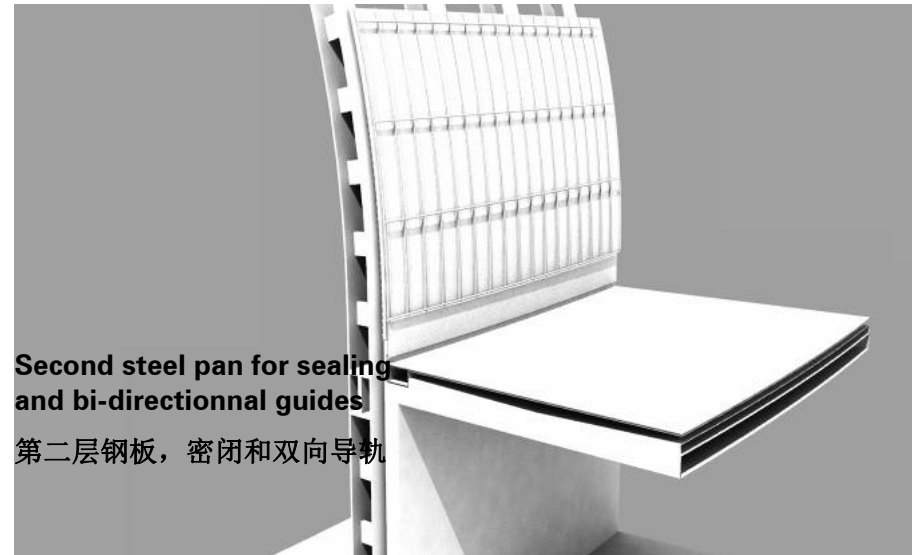
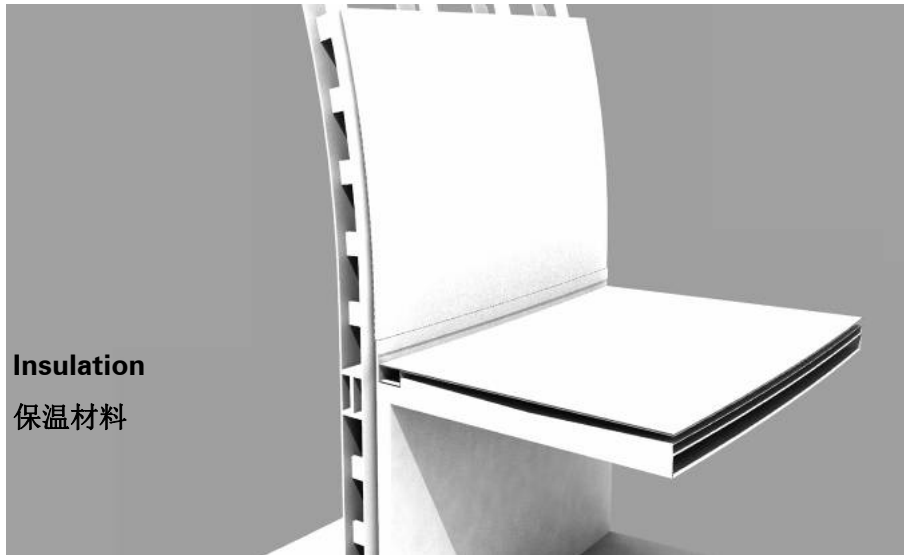
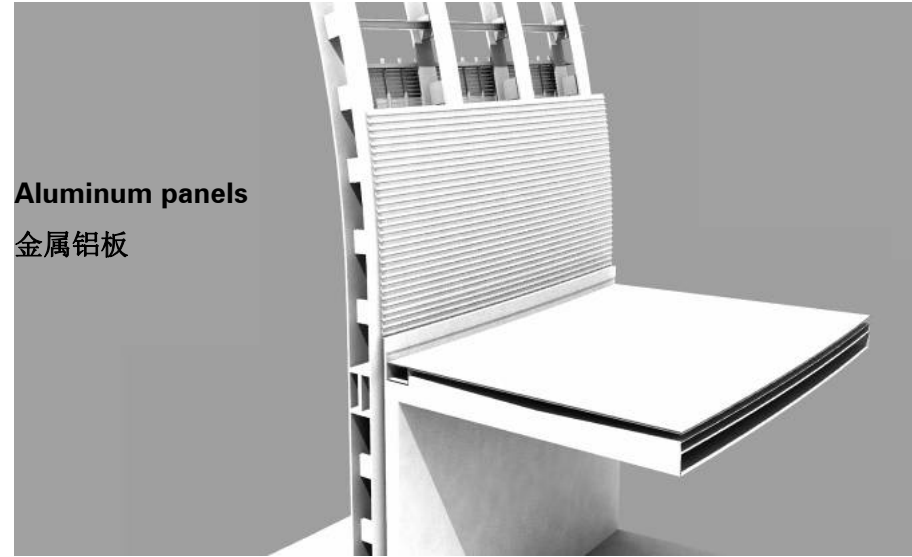
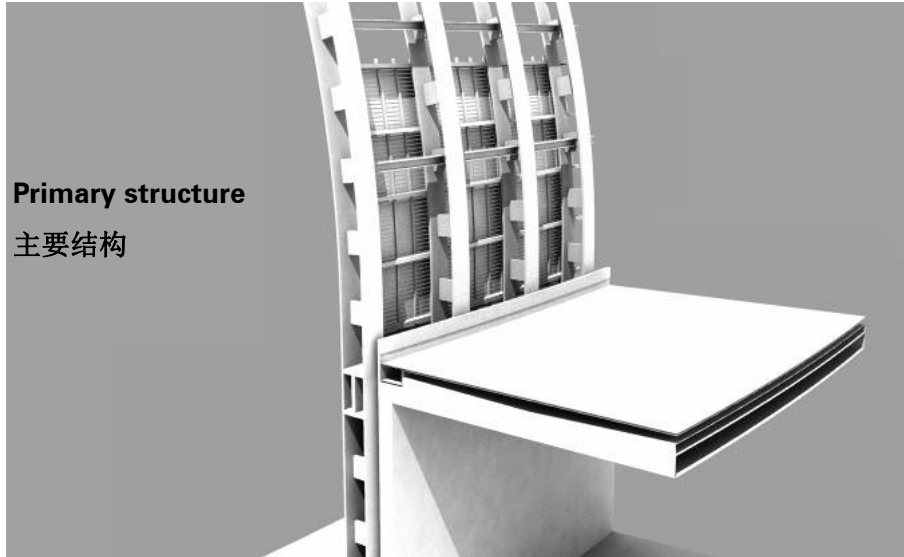
> 3D Facade Shells 壳体立面的三维视角



> Shells composition 壳体构成

Shells / outer coating

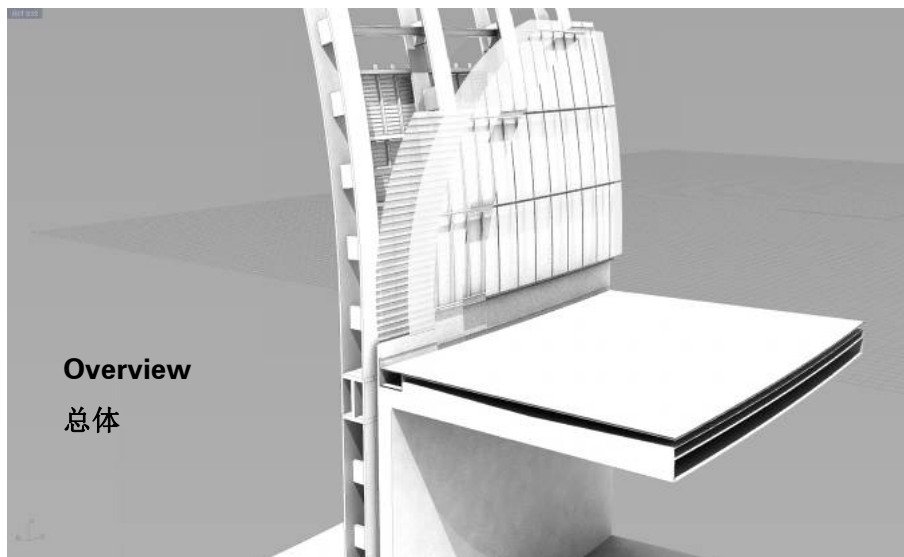
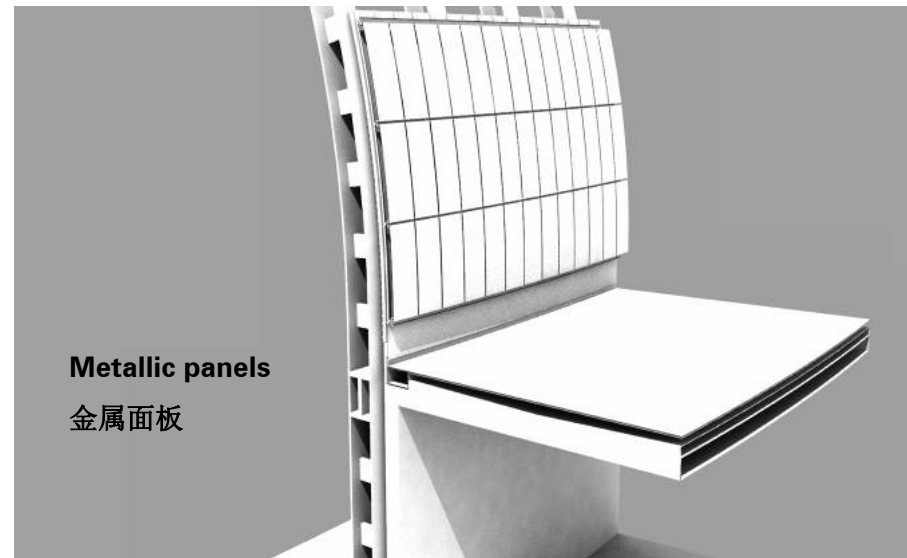
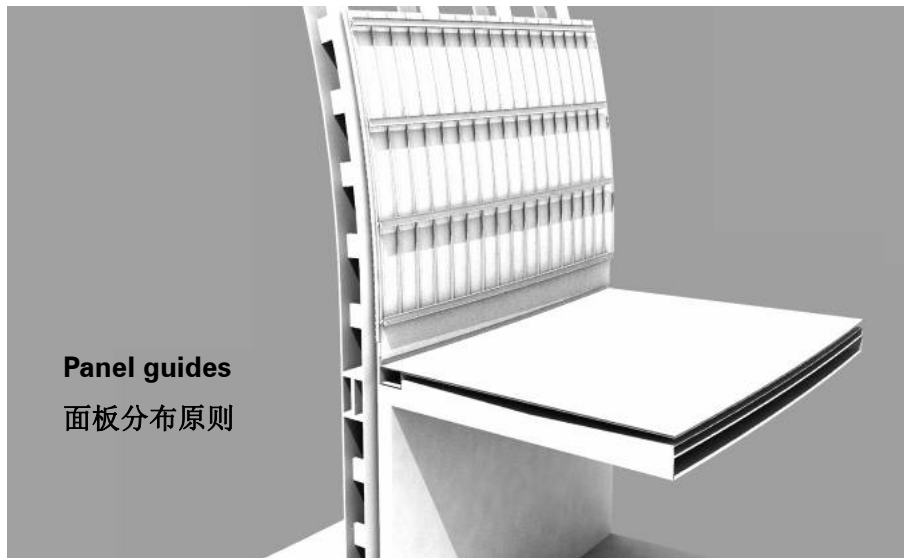
壳体/外部表皮构造



> Shells composition 壳体构成

Shells / outer coating

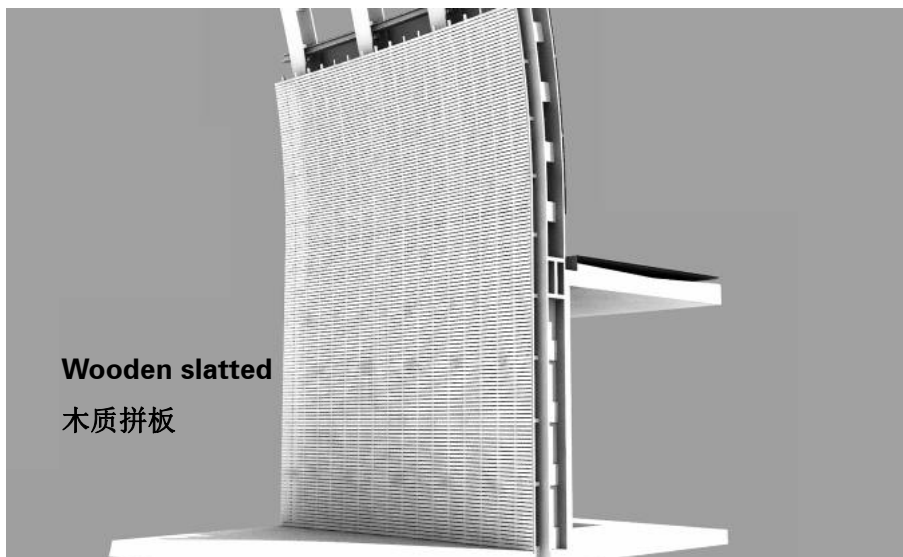
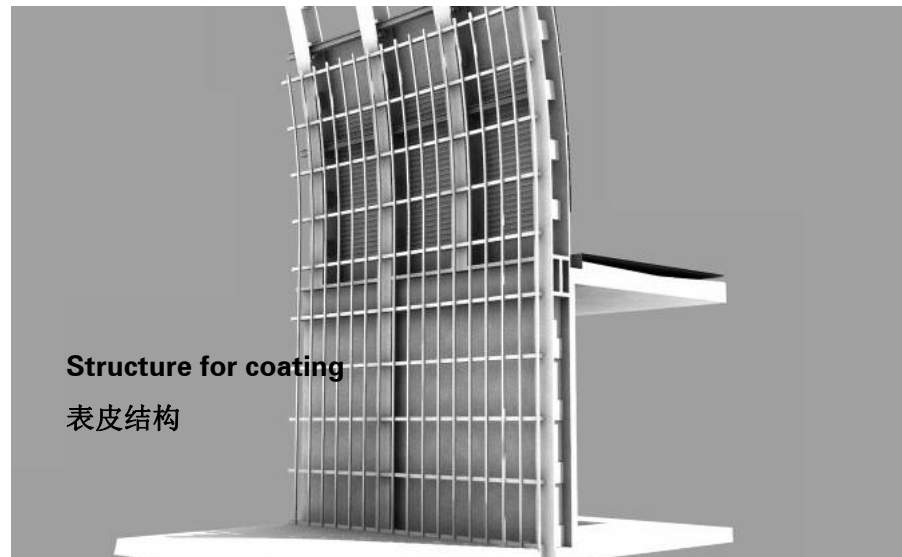
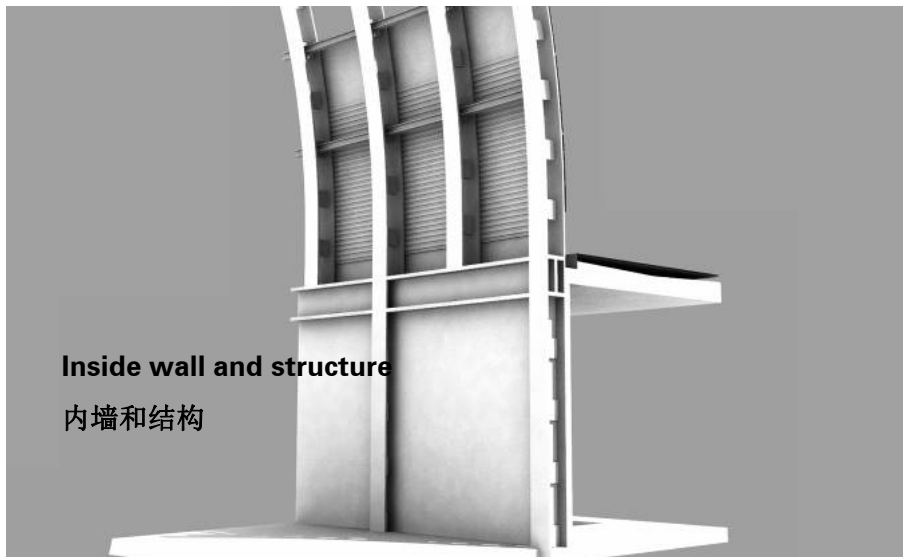
壳体/外部表皮构造



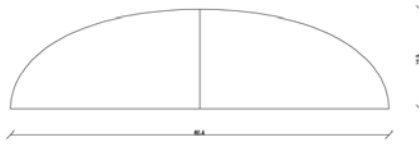
> Shells composition 壳体构成

Shells / interior coating

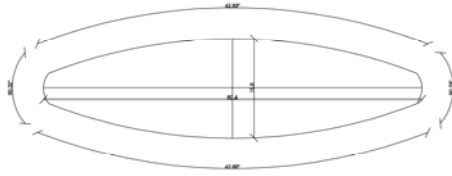
壳体/内部表皮构造



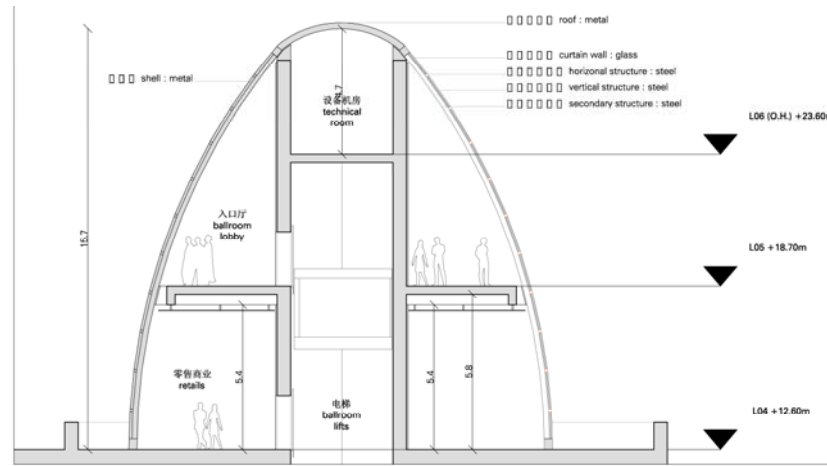
> Side buildings 侧翼建筑



立面 - ELEVATION 1:500

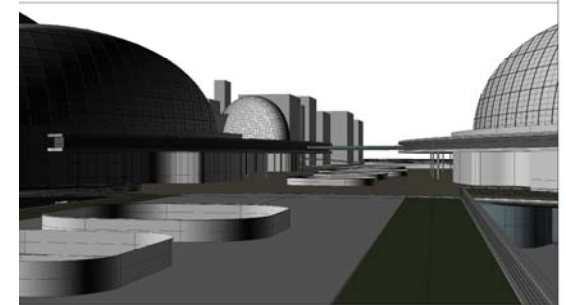
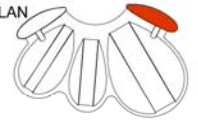


平面-PLAN 1:500

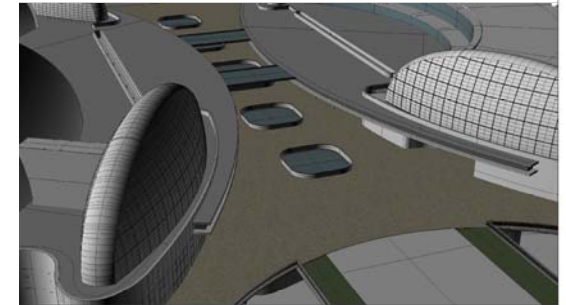


垂直剖面细节图-DETAIL VERTICAL SECTION 1:100

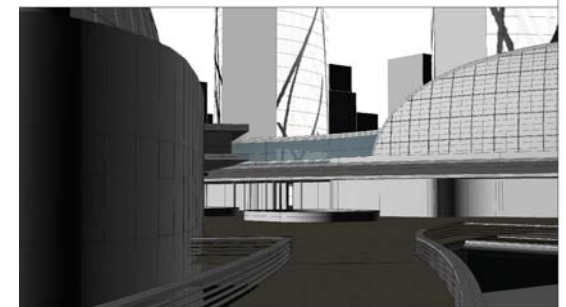
索引平面图-KEY PLAN



3D 立面图(南侧)-3D ELEVATION (south)



3D 立面图(南侧)-3D ELEVATION (south)



3D 立面图(南侧)-3D ELEVATION (south)

