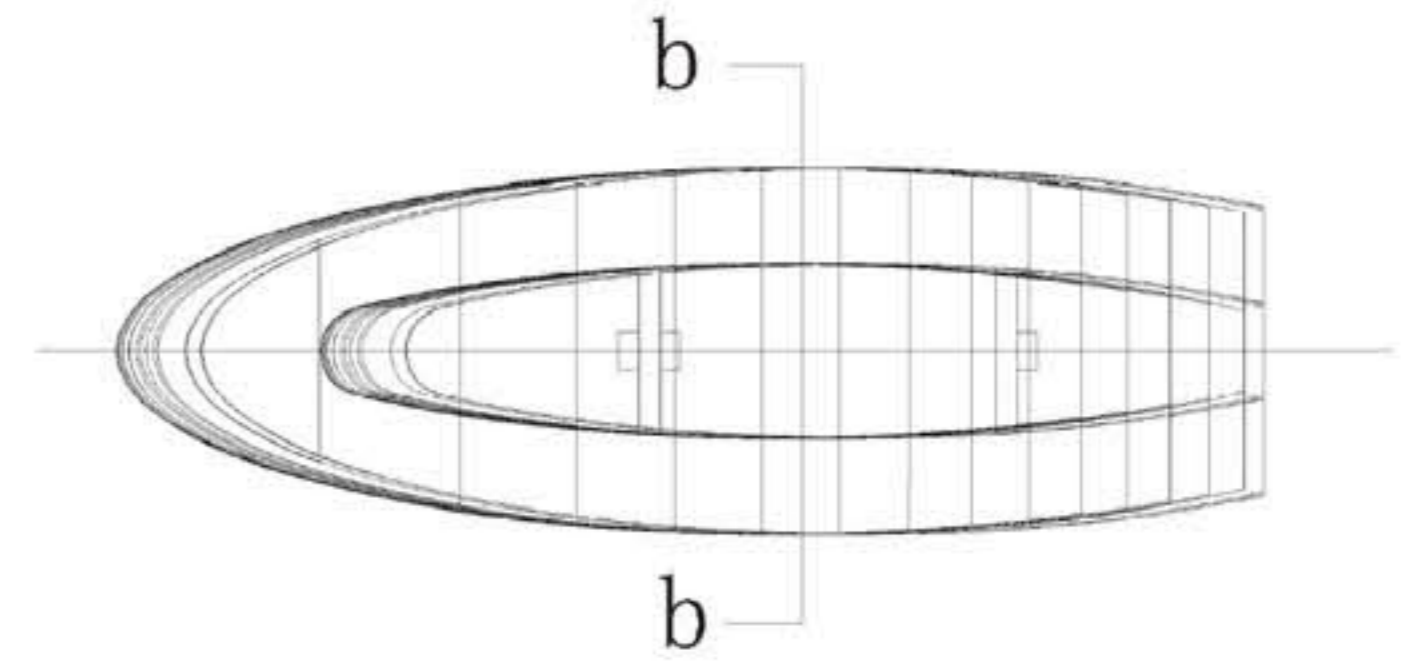


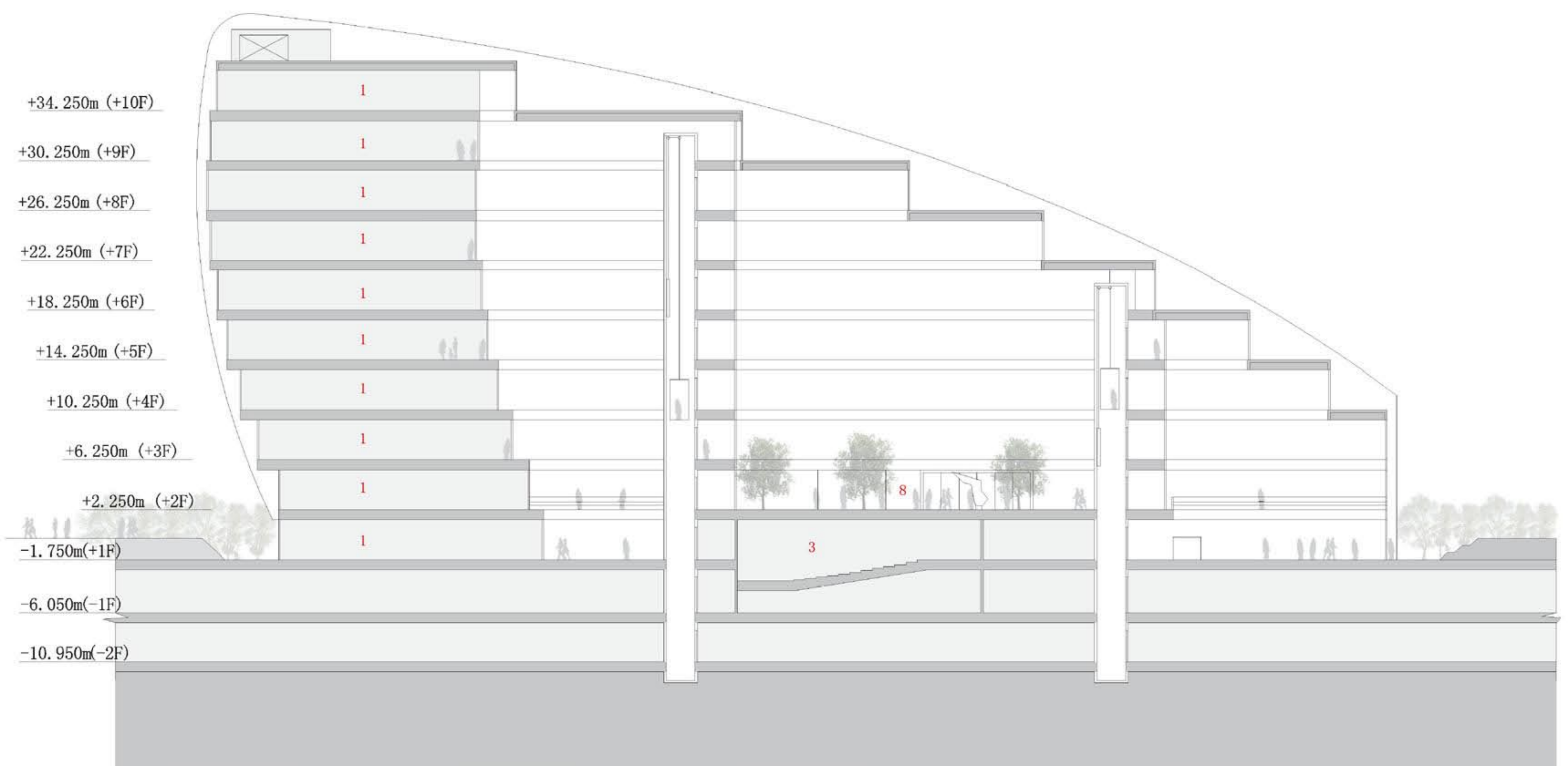
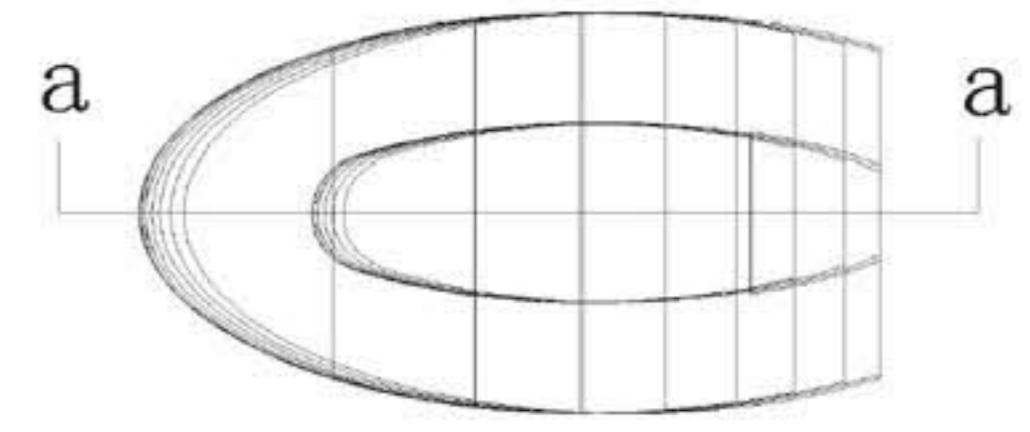
a-a剖平面图
a-a SECTION (34.25m)

- | | | | |
|-------------|----------------------|--------------------|------------------------|
| 1 办公 | OFFICE | 8 中庭空间 | ATRIUM |
| 2 会议厅 (450) | CONFERENCE HALL | 9 绿色大厅 | GREEN HALL |
| 3 会议厅 (250) | CONFERENCE HALL | 10 空中连廊 | FOOT BRIDGE |
| 4 信息中心 | IFORMATION CENTER | 11 交流平台 | COMMUNICATE PLAT |
| 5 多功能厅 | MULTI-FUNCTIONS HALL | 12 储藏室 | STORE ROOM |
| 6 接待中心 | RECEPTION CENTER | 13 消防控制及 保安监控中心 | ANTI FIIRE CONTRL ROOM |
| 7 休息大厅 | REST HALL | | |



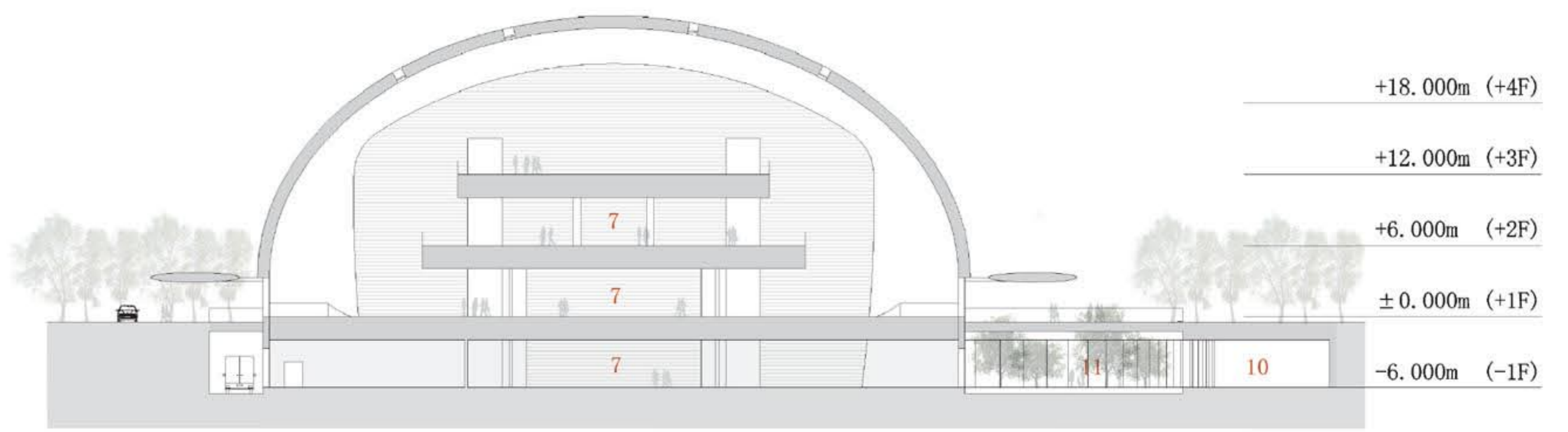
b-b剖面图
b-b SECTION (34.250m)

| | | | |
|-------------|----------------------|--------------------|-----------------------|
| 1 办公 | OFFICE | 8 中庭空间 | ATRIUM |
| 2 会议厅 (450) | CONFERENCE HALL | 9 绿色大厅 | GREEN HALL |
| 3 会议厅 (250) | CONFERENCE HALL | 10 空中连廊 | FOOT BRIDGE |
| 4 信息中心 | INFORMATION CENTER | 11 交流平台 | COMMUNICATE PLAT |
| 5 多功能厅 | MULTI-FUNCTIONS HALL | 12 储藏室 | STORE ROOM |
| 6 接待中心 | RECEPTION CENTER | 13 消防控制及 保安监控中心 | ANTI FIRE CONTRL ROOM |
| 7 休息大厅 | REST HALL | | |

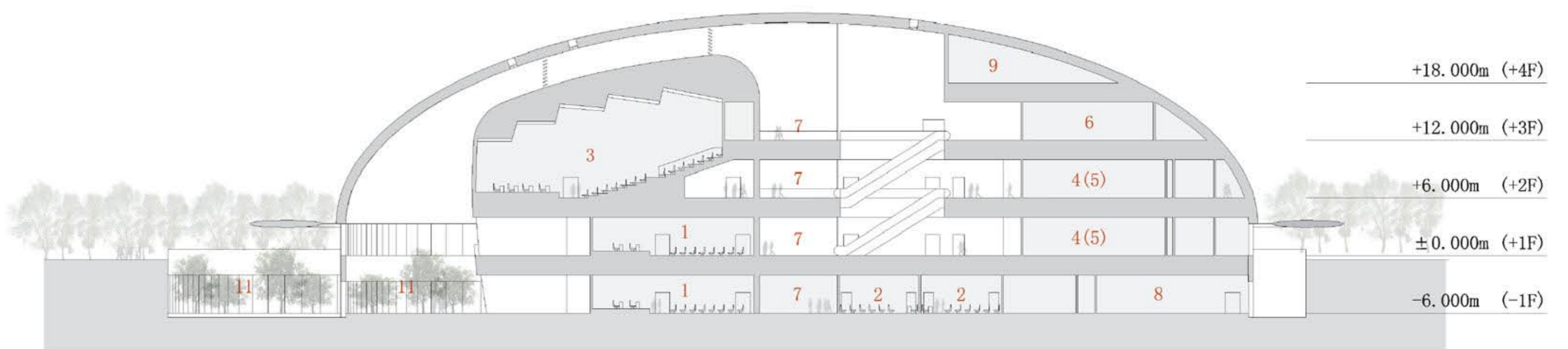
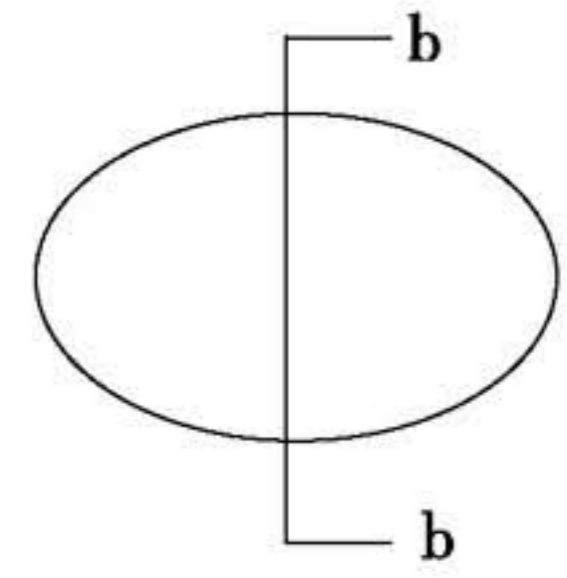


a-a剖平面图
a-a SECTION

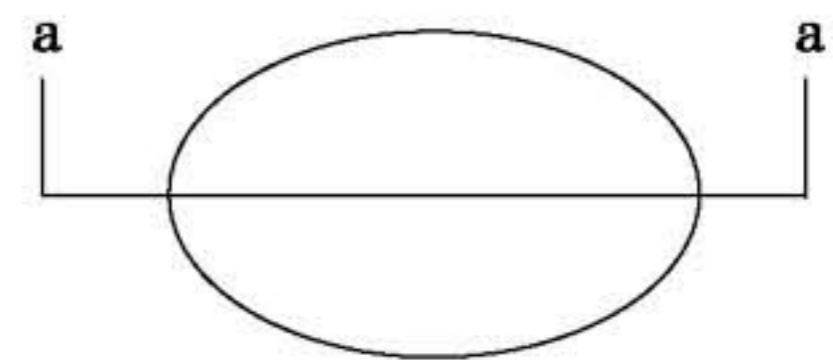
- | | | | |
|-------------|----------------------|----------|------------------------|
| 1 办公 | OFFICE | 8 中庭空间 | ATRIUM |
| 2 会议厅 (450) | CONFERENCE HALL | 9 绿色大厅 | GREEN HALL |
| 3 会议厅 (250) | CONFERENCE HALL | 10 空中连廊 | FOOT BRIDGE |
| 4 信息中心 | IFORMATION CENTER | 11 交流平台 | COMMUNICATE PLAT |
| 5 多功能厅 | MULTI-FUNCTIONS HALL | 12 储藏室 | STORE ROOM |
| 6 接待中心 | RECEPTION CENTER | 13 消防控制及 | ANTI FIIRE CONTRL ROOM |
| 7 休息大厅 | REST HALL | 保安监控中心 | |



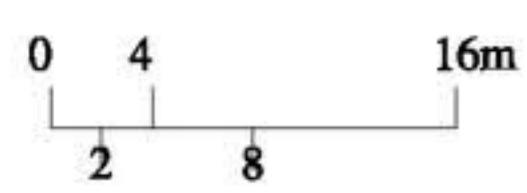
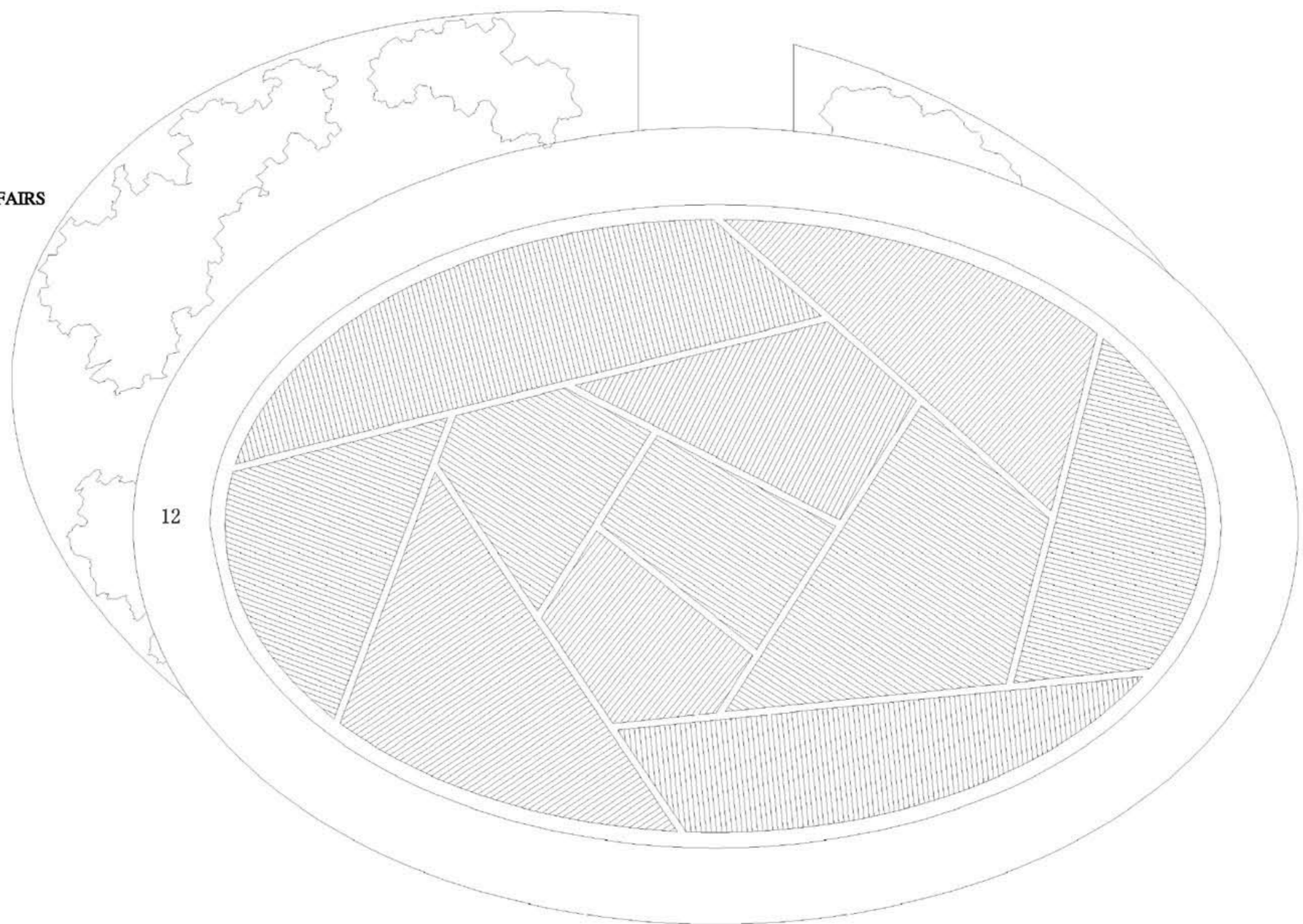
b-b剖面图
b-b SECTION



a-a剖面图
a-a SECTION



- 1 100人会议室
100 PERSON COUNCIL CHAMBER
- 2 50人会议室
50 PERSON COUNCIL CHAMBER
- 3 350人会议室
350 PERSON COUNCIL CHAMBER
- 4 外事接待厅
RECEPTION HALL OF EXTERNAL AFFAIRS
- 5 中型接待厅
MEDIUM RECEPTION
- 6 大宴会厅
SMALL RECEPTION
- 7 交通厅
LOBBY
- 8 厨房
KITCHEN
- 9 机房
APPARATUS ROOM
- 10 通讯
COMMUNICATIONS COMPANY
- 11 庭院
GARDEN
- 12 雨蓬
AWANING



屋顶平面图
ROOF FLOOR LAYOUT